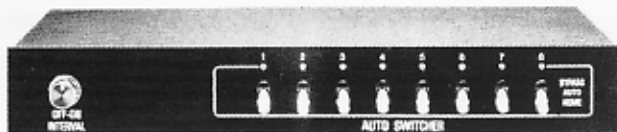


AUTO SWITCHER



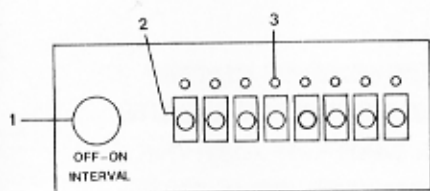
INSTRUCTION MANUAL

AUTO SWITCHER

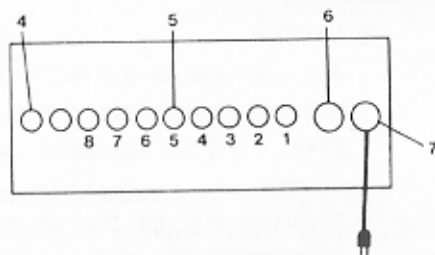
1. DESCRIPTION:

AUTOMATIC SEQUENTIAL SWITCHERS ENABLE TWO MONITOR TO CONNECTED AND SCREEN 2, 4, 6 OR 8 REMOTE CCTV CAMERAS, EACH CAMERA CAN BE POSITIONED IN THE AREAS WHERE YOU NEED SURVEILLANCE. ALL SWITCHERS AUTOMATICALLY SEQUENCE CAMERAS WITH OPERATOR SELECTED, VARIABLE DWELL TIMR FROM 1 TO 35 SECONDS CONTINUOUS CAMERA IDENTIFICATION IS MADE ON THE SWITCHER FRONT PANEL WITH NUMBERED CHANNEL ID. SEQUENTIAL HOMING SWITCHERS ARE CONVENIENT TO FIT EASILY ON DESK OR TABLE.

2. FUNCTION:



FRONT VIEW



BACK VIEW

① POWER SWITCH WITH DWELL TIME:

IF TURN THE KNOB SWITCH TO CLOCKWISE DIRECTION CAN HEAR CLICK THAT'S TURN ON THE POWER AND SAME TIME CAN ADJUSTMENT DWELL TIME FROM 1 TO 35 SECONDS.

② MODE SELECTOR:

A. BY-PASS:

MONITORING FOR THE CAMERA AT BY-PASS POSITION IS AUTOMATICALLY SKIPPED.

B. AUTO:

ALL SWITCHERS AUTOMATICALLY SEQUENCE CAMERAS WITH OPERATOR SELECTED AND VARIABLE DWELL TIME FROM 1 TO 35 SECONDS.

C. HOME:

KEEPING THE SWITCH AT THIS POSITION MAKES HOME CONDITION FOR THE CAMERA NUMBERED, THEN CHANNEL ID. WILL BE DISPLAY THE NUMBER.

③ CHANNEL ID. LED

IF MODE SELECTOR SET TO "AUTO" POSITION. THE CHANNEL ID. WILL BE DISPLAYED RECYCLE. AND DWELL TIME FROM 1 TO 35 SECONDS, DEPEND ON POWER SWITCH TO ADJUSTED.

IF MODE SELECTOR SET TO "HOME" POSITION, THE CHANNEL ID. WILL BE DISPLAYED THE CHANNEL BY LED TO SELECTED.

④ OUT(VIDEO):BNC CONNECTOR

VIDEO OUTPUT CONNECTED WITH MONITORS TO MONITOR.

⑤ IN(VIDEO):BNC CONNECTOR

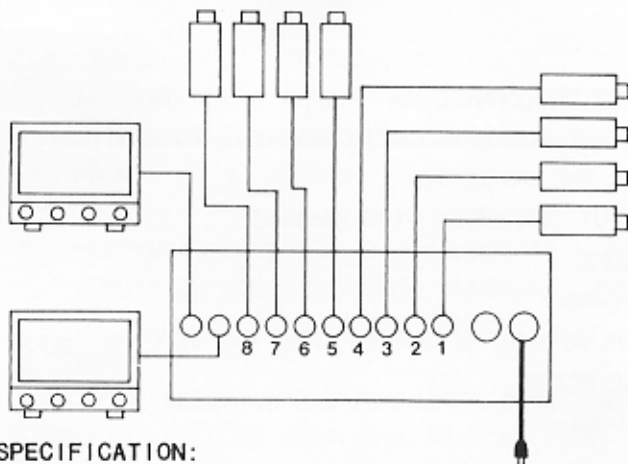
VIDEO INPUT CONNECTED WITH CAMERAS.

⑥ FUSE HOLDER:

⑦ AC PLUG CORD:

PUT THE PLUG INTO AC OUTLET FROM THE WALL OR SOCKET
TO GET AC POWER.

3. CONNECTIONS:



4. SPECIFICATION:

VIDEO INPUT : 1.0Vp-p, 75 OHM, 2, 4, 6 OR 8 INPUTS

VIDEO OUTPUT : 1.0Vp-p, 75 OHM, 2 OUTPUTS

VIDEO BANDWIDTH: 20 MHZ \pm 3dB

MAX VIDEO INPUT VOLTAGE: 2.0 Vp-p

MAX OUTPUT GAIN: 40dB

SWITCHING INTERVAL:1~35 SECONDS

(CAN CONNECTED WITH 2 MONITORS SAME TIME)

INPUT VOLTAGE:AC 110V/60HZ(220V/50HZ OPTIONAL)

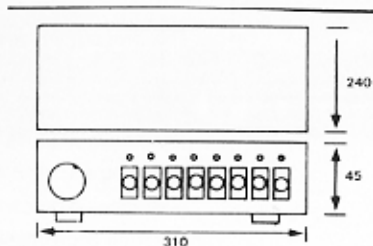
POWER CONSUMPTION:5 WATTS

OPERATING TEMPERATURE: -10°C~+50°C



DIMENSION:310(W)×45(H)×240(D)MM

NET/GROSS WEIGHT:3KGS/3.2KGS

PACKING:10PCS/CTN/3.65/NW:30KGS, GW:32KGS



IMPORTANT SAFEGUARDS

	CAUTION RISK OF ELECTRIC SHOCK DO NOT OPEN	
<p>CAUTION: TO REDUCE THE RISK OF ELECTRIC SHOCK, DO NOT REMOVE COVER (OR BACK). NO USER-SERVICEABLE PARTS INSIDE. REFER SERVICING TO QUALIFIED SERVICE PERSONNEL.</p>		

GRAPHIC SYMBOL EXPLANATION

The lightning flash with arrowhead symbol, within an equilateral triangle, is

intended to alert the user to the presence of uninsulated "dangerous voltage" within the product's enclosure that may be of sufficient magnitude to constitute a risk of electric shock to persons.



The exclamation point within an equilateral triangle is intended to alert the user to the presence of important operating and maintenance (servicing) instructions in the literature accompanying the unit.

