



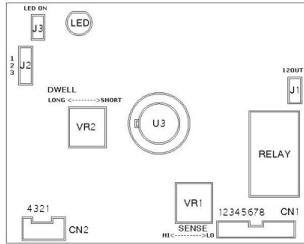
VT-PIRC2
VT-PIRC2/H
Color PIR Cameras



- Color CCD Image Sensor with 420 TV Lines (VT-PIRC2) / 550 TV Lines (VT-PIRC2/H)
- Minimum Illumination of 0.2 Lux / 0.5 Lux (VT-PIRC2/H)
- Pinhole 3.8mm / f2.0 Lens Included
- NC/C/NO Alarm Output
- Working 100' Motion Detection Using 58 Beams Within 3 layers (35' x 35' Coverage Area)

VITEK

PIR BOARD LAYOUT



- 1. LED:** When an intrusion is detected, the LED will activate.
 - 2. J2:** Pulse count setting.
 - 1-2 short (default):** Relay will activate when an intrusion is detected once. (For stable environments or high risk operating environments)
 - 2-3 short:** Relay will activate when an intrusion is detected twice within 15 seconds. (For harsh environments)
 - 3. J1:** Relay output select.
 - Short:** For outer control used in area where DC12V is requested (Limited at 200mA).
 - Normal:** N.C. = DC12V out
 - Activate:** N.O. = DC12V out
- Caution! Risk of electric shock. Set-up and operation should be performed by authorized service person only.**
- Open (default):** Normal relay connector (1.5A at DC24V/1.5A at AC120V/1A at AC240V)
 - Normal:** C & N.C. short / C & N.O. open.
 - Activate:** C & N.C. open / C & N.O. short.
- 4. VR1:** Sensitivity adjustment.
Turn clockwise for low sensitivity, turn counter-clockwise for high.
 - 5. VR2:** Relay activation time adjustment (range about 2 ~ 30 seconds).
Turn clockwise for short time, turn counter-clockwise for long.
 - 6. NC/C/NO Wiring:**

C: BLACK **NO:** WHITE **NC:** RED
 - 7. J3:** LED on/off
Open: LED off Short: LED on
- | | |
|-------------------------------------------------------------------------------------------------------------------------------------------------------------------------------------------------------------------------------------------------------------------------------------------|-----------------------------------------------------------------------------------------------------------------------------------------------------------------------------------------------------------------------|
| <p>CN1 Connector:</p> <ol style="list-style-type: none"> 1. DC 12V IN 2. GND 3. AUDIO OUT (option) 4. GND 5. VIDEO OUT 6. RELAY C. (common) 7. RELAY N.O. (normal open) 8. RELAY N.C. (normal close) | <p>CN2 Connector:</p> <ol style="list-style-type: none"> 1. AUDIO IN (Not Available In US) 2. VIDEO IN (from CCD MODULE) 3. GND 4. DC 12V/500mA OUT (for CCD MODULE) |
|-------------------------------------------------------------------------------------------------------------------------------------------------------------------------------------------------------------------------------------------------------------------------------------------|-----------------------------------------------------------------------------------------------------------------------------------------------------------------------------------------------------------------------|

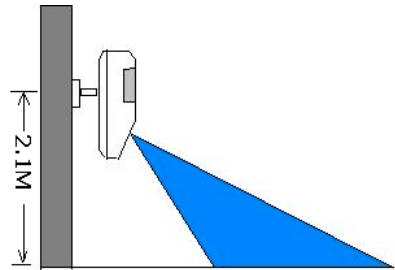
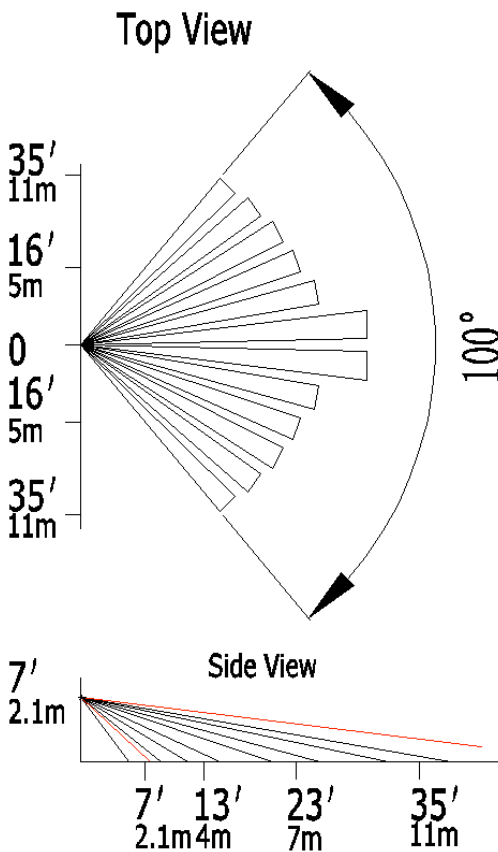
PIR SPECIFICATIONS

SPECIFICATIONS	VT-PIRC2	VT-PIRC2/H
Image Device	1/4" Color CCD	1/3" Color CCD
Effective Pixels	510 x 492	811 x 508
Resolution	420 TV Lines	550 TV Lines
Minimum Illumination	0.2 Lux	0.5 Lux
PIR Detection Range	100° / 35' x 35' Coverage Area	
PIR Alarm Output	NC/N/NO	
AGC	>18db	
S/N Ratio	More Than 48dB	
Video Output	Composite: 1.0 Vp-p / 75 Ohm	
Auto Electronic Shutter	1/60 to 1/100,000 sec.	
Standard Pinhole Lens	3.8mm / F2.0	
Power Source	12VDC (300mA Regulated)	
Power Consumption	150mA	
Operation Temperature	14°F ~ 140°F (-10°C ~ 60°C)	
Humidity	0-95%	
Dimensions (WxHxD)	2.75" x 4.72" x 1.69" / 70mm x 120mm x 43mm	

****12VDC Regulated power adapter 12V must be used otherwise the device will be damaged and un-repairable.**

PIR DETECTION RANGE

PIR detection range



1. Matching field of view for both the PIR and CCTV cameras.
2. The PIR camera is a double duty surveillance tool that combines the detection capability of a professional PIR with the viewing capability of a security camera.
3. Easy-connect leads.
4. Fully adjustable, heavy-duty swivel-mount bracket included.
5. The PIR camera is able to detect human movement in a dark environment and still output the NC/NO signal to turn on a light, other alarm device or recording machine. Normal cameras see nothing, so they do not activate any devices in this situation.

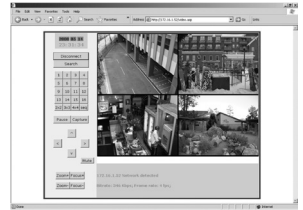
PIR FEATURES

- Hidden
- Stable sensitivity
- Motion activated alarm output to control panel
- Lamp
- VCR
- Ability to change from a static to a dynamic state
- High quality and highly sensitive sensor
- Exceptional at detecting unexpected movements
- Uses Hi-Tech SMD technique
- Sensitivity and response time can be calibrated according to the applications
- Guards have no need to watch the monitor day and night - The PIR does the 'watching' on it's own



VT-H Series

4, 8, and 16 Channel Digital Video Recorders with H.264 Compression



The Alpha Series VT-H Series Digital Recorders combine the latest H.264 Compression technology with stability and simple operation. H.264 Compression is the next generation of MPEG4 allowing up to 50% smaller file sizes for increased storage capability and/or resolution as well as a more fluid internet transmission speed. VT-H Series DVRs can be controlled via supplied IR Remote control or remote client.

- 4, 8, or 16 Video Inputs with 1 BNC & 1 VGA Output
- H.264 Compression
- Supports both Dynamic and Static IP Addresses
- Up to 120 IPS Recording / Live Display
- Remote Viewing over the Internet or LAN
- Supports one internal SATA Hard Drive
- 250GB to 1TB Internal Storage Options
- Quadplex operation enabling simultaneous recording, playback, networking, and backup

H.264





VTM-LCDP Series

- 15", 17", and 19" Professional LCD Display Panels
- Designed for continuous 24/7 operation
- VGA, Looping BNC Composite, and S-Video Video Inputs. DVI & HDMI Inputs on 17" & 19" Versions
- Resolution up to 1280 X 1024 (17" & 19")
- Stereo Audio Input/Output
- VESA Standard Mounting

LIMITED LIABILITY WARRANTY

VITEK products carry a three (3) year limited warranty. VITEK warrants to the purchaser that products manufactured by VITEK are free of any rightful claim of infringement or the like, and when used in the manner intended, will be free of defects in materials and workmanship for a period of three (3) years, or as otherwise stated above, from the date of purchase by the end user. This warranty is non-transferable and extends only to the original buyer or end user customer of a Vitek Authorized Reseller.

The product must have been used only for its intended purpose, and not been subjected to damage by misuse, willful or accidental damage, caused by excessive voltage or lightning.

The product must not have been tampered with in any way or the guarantee will be considered null and void.

This guarantee does not affect your statutory rights.

Contact your local VITEK Reseller should servicing become necessary.

VITEK makes no warranty or guarantee whatsoever with respect to products sold or purchased through unauthorized sales channels. Warranty support is available only if product is purchased through a VITEK Authorized Reseller.



28492 CONSTELLATION ROAD VALENCIA, CA 91355
WWW.VITEKCCTV.COM